



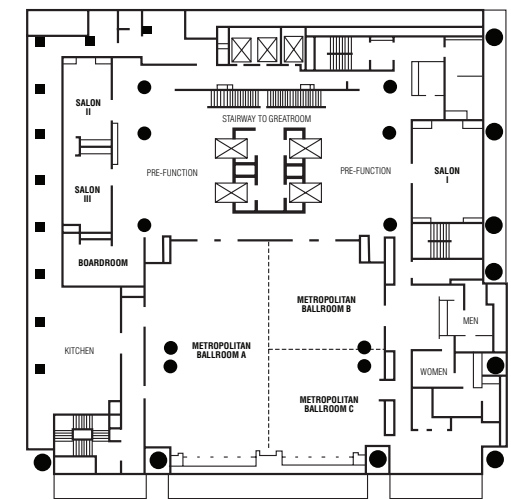
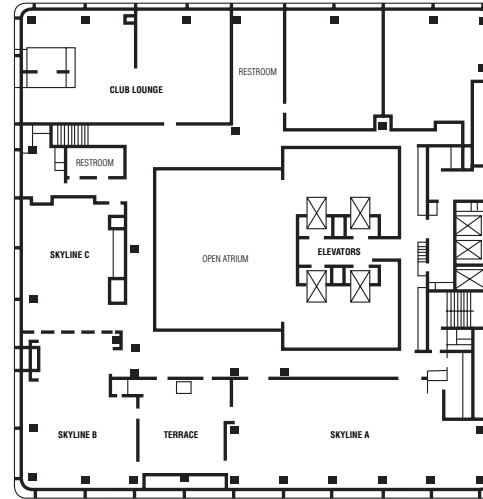
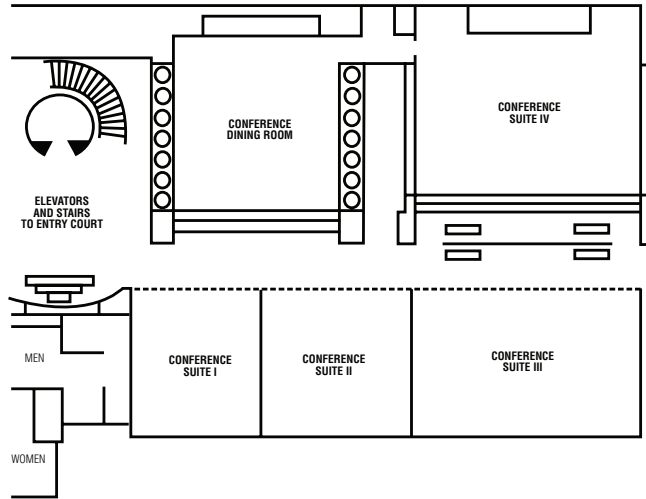
**AN EFFORTLESSLY
UNFORGETTABLE DESTINATION.**

Rising 21 stories above San Francisco's famed Union Square, the JW Marriott® Hotel San Francisco places guests in the heart of one of the world's most dazzling gateway cities. Here, the fusion of many cultures and cuisines translates into an enthralling and endlessly entertaining destination. And the city's surrounding greens, bays and Pacific beaches provide boundless recreational opportunities. Designed for performance and tranquility, our guest rooms offer 42" LCD TVs with a plug-in panel for complete connectivity. Experience dining that not only inspires the palate, but reminds you of how powerful a memorable meal can be, in our *Level Three Restaurant*. Your meeting goals will be met with sophisticated technology and exceptional catering, along with a distraction-free environment that allows your group to enjoy a seamless and fluid meeting experience.

JW MARRIOTT®
SAN FRANCISCO



500 Post Street corner of Post and Mason San Francisco, CA 94102
Phone: 415.771.8600 Fax: 415.398.0267 jwmarriottunionsquare.com



ACCOMMODATIONS

21 floors • 8 guest suites • 329 guest rooms • Wired and wireless Internet access • One-touch 24-hour personal butler button • Ergonomically designed work desk with Herman Miller Aeron chair • Bathrobes • Separate tub and shower • Hair dryer • Coffee maker • Tea service • Bose Wave radio • In-room safe • LCD TV • Revive® Collection bedding

RESTAURANTS & LOUNGES

Level Three Restaurant, an open and eclectic space offering a stylish, fun and social dining experience with a menu reflecting the abundant culinary resources found in the Bay Area and surrounding regions • *Level Three Bar*, featuring a distinctive array of handcrafted cocktails and a wine list highlighting the wine regions of Northern California

RECREATION & LEISURE

24-hour fitness center • Biking and hiking trails, golf courses, horseback riding, San Francisco beaches, sailing and surfing, squash and tennis all nearby

ATTRACTIONS

Alcatraz Island • AT&T Park/Giants Baseball • Cable Cars/Powell Street • Moscone Convention Center • Golden Gate Bridge • Angel Island • Chinatown • Fisherman's Wharf • Ghirardelli Square • Pier 39 • San Francisco Zoo • Union Square

GUEST SERVICES

Smoke-free environment • Complimentary shoeshine • Cash machine/ATM • Concierge desk • Evening turndown service • Foreign currency exchange • Newspaper delivered to room • Newspaper in lobby • Room service, 6 a.m.-11 p.m. • Safe-deposit boxes, front desk • Valet dry cleaning

MEETING FACILITIES

18 meetings rooms • 11,820 square feet of total meeting space • Wired and wireless Internet access • Metropolitan Ballroom with maximum meeting space of 4,352 square feet and maximum seating capacity of 370 • Exceptional catering capabilities

LOCATION

Situated in the heart of downtown San Francisco • Conveniently located near Nob Hill, Chinatown and the famed Moscone Convention Center

Meeting Room	Dimensions		Capacity					
	LxWxH	Sq. Ft.	Theater	Schoolroom	Conference	U-Shape	Reception	Banquet
Metropolitan Ballroom	64x68x11	4,352	465	250	100	100	500	370
Metropolitan A	61x34x11	2,074	230	125	52	51	175	160
Metropolitan B	32x34x11	1,088	100	60	28	27	100	80
Metropolitan C	29x34x11	986	94	54	28	27	100	80
Metropolitan BC	61x34x11	2,074	230	125	52	51	175	160
Salon I	27x19x9	500	50	30	24	24	45	50
Salon II	21x15x9	315	30	18	16	15	25	20
Salon III	24x15x9	353	40	24	16	15	35	30
Boardroom	21x12x9	250	—	—	10	—	10	10
Skyline A	73x25x10	1,825	150	84	58	63	150	120
Skyline B	40x25x10	1,000	93	45	26	30	80	80
Skyline C	40x25x10	1,000	90	45	26	30	80	70
Skyline BC	80x25x10	2,000	170	90	64	66	180	140
Terrace	25x25x20	625	—	—	—	—	40	30
Executive Conference Center Suite I	15x18x8	270	20	12	10	—	—	10
Executive Conference Center Suite II	18x18x8	324	25	18	12	—	—	20
Executive Conference Center Suite III	27x18x8	486	40	24	22	22	40	40
Executive Conference Center Suite IV	28x22x8	616	50	30	24	24	65	50
Executive Conference Dining Room	23x23x8	529	36	18	14	—	50	36